

PRÜM Türenhandbuch

Türenhandbuch

Allgemeine Informationen » Montageanleitungen

Türschließer » DORMAKABA » TS 93



Allgemeine Informationen:



Dormakaba TS-93

Technikprospekt

Stand: 04-2021



1-flügelig - Standard:



Dormakaba TS-93-B

Montageanleitung + Bohrschablone

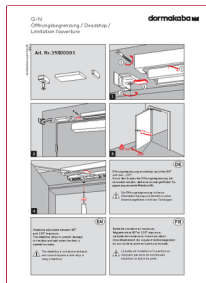
Stand: 03-2020



Dormakaba TS-93-G

Montageanleitung + Bohrschablone

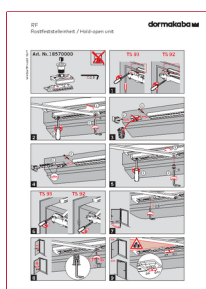
Stand: 04-2020



Dormakaba TS-93

Montageanleitung Öffnungsbegrenzung

Stand: 02-2020

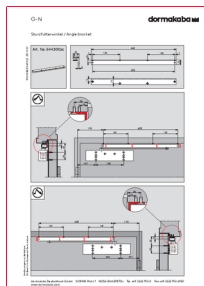


Dormakaba TS-93

Montageanleitung Rastfeststelleinheit RF

Stand: 10-2019





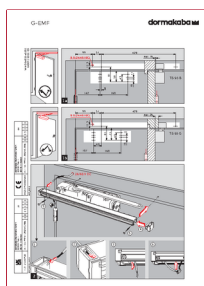
Dormakaba TS-93

Montageanleitung Sturzfutterwinkel

Stand: 07-2019



1-flügelig - EMF:



Dormakaba TS-93-EMF - 120 Grad

Montageanleitung - Bild

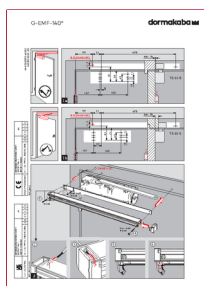
Stand: 03-2022



Dormakaba TS-93-EMF - 120 Grad

Montageanleitung - Text

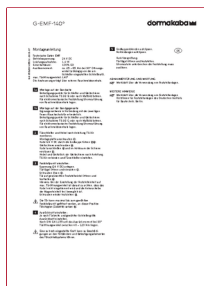
Stand: 07-2019



Dormakaba TS-93-EMF - 140 Grad

Montageanleitung - Bild

Stand: 03-2022

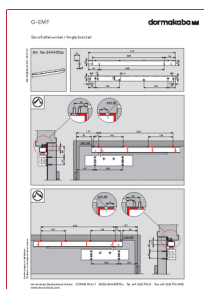


Dormakaba TS-93-EMF - 140 Grad

Montageanleitung - Text

Stand: 07-2019





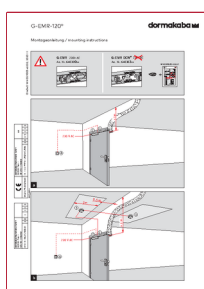
Dormakaba TS-93-EMF

Montageanleitung Sturzfutterwinkel

Stand: 07-2019



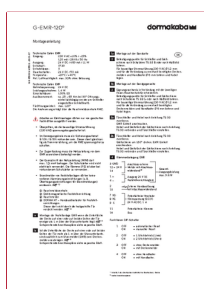
1-flügelig - EMR:



Dormakaba TS-93-EMR - 120 Grad

Montageanleitung - Bild

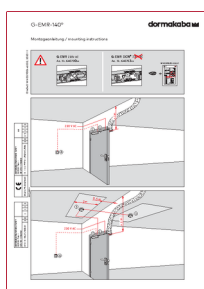
Stand: 11-2020



Dormakaba TS-93-EMR - 120 Grad

Montageanleitung - Text

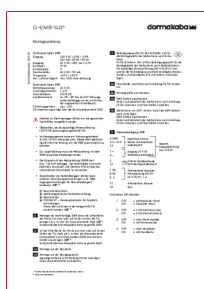
Stand: 07-2019



Dormakaba TS-93-EMR - 140 Grad

Montageanleitung - Bild

Stand: 11-2020

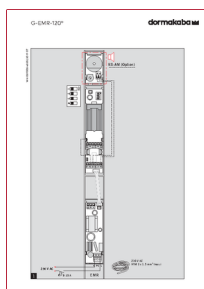


Dormakaba TS-93-EMR - 140 Grad

Montageanleitung - Text

Stand: 07-2019





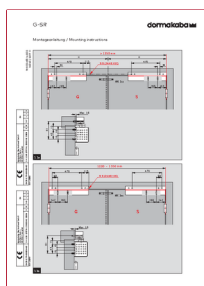
Dormakaba TS-93-EMR - 120 Grad

Anschlusspläne

Stand: 07-2019



2-flügelig - GSR:



Dormakaba TS-93-GSR

Montageanleitung - Bild

Stand: 11-2019



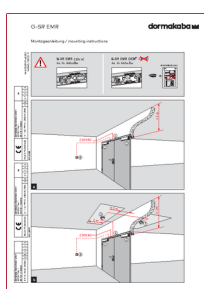
Dormakaba TS-93-GSR

Montageanleitung - Text

Stand: 07-2019



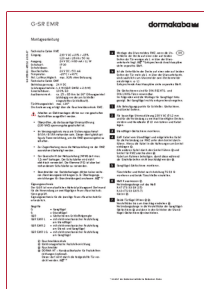
2-flügelig - GSR-EMR:



Dormakaba TS-93-GSR-EMR

Montageanleitung - Bild

Stand: 11-2020



Dormakaba TS-93-GSR-EMR

Montageanleitung - Text

Stand: 07-2019

