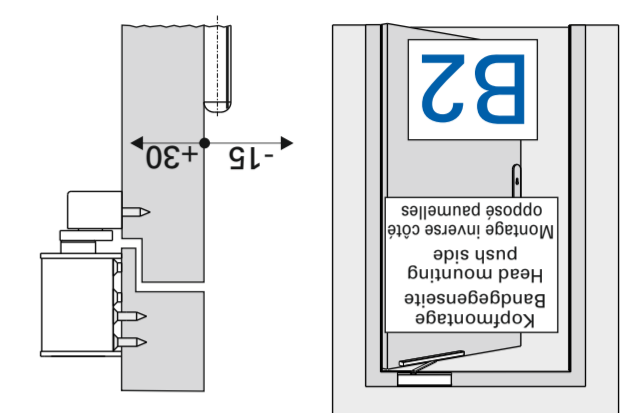


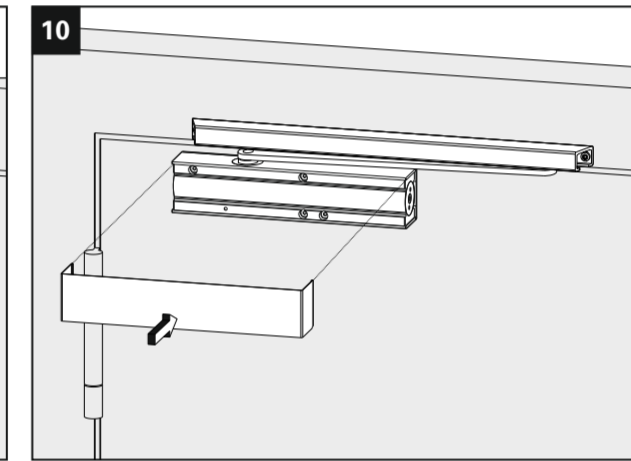
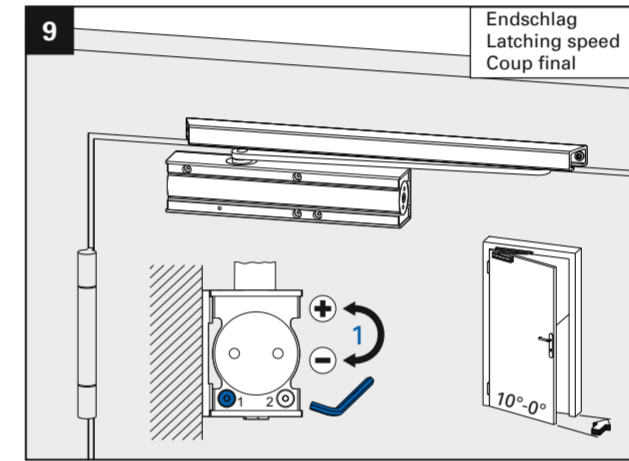
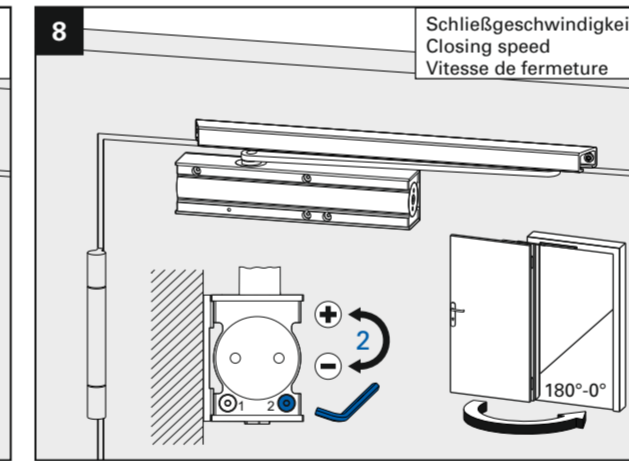
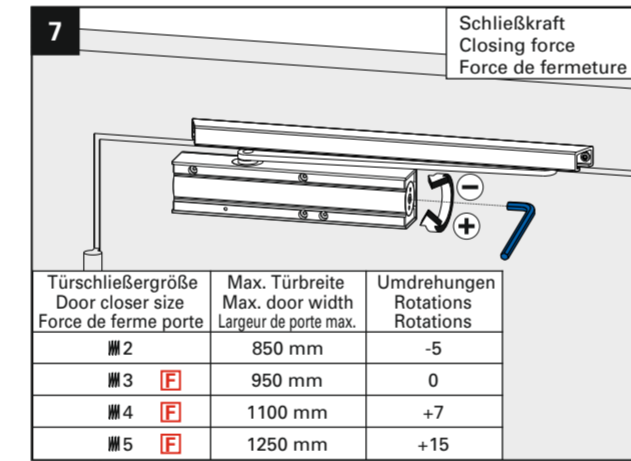
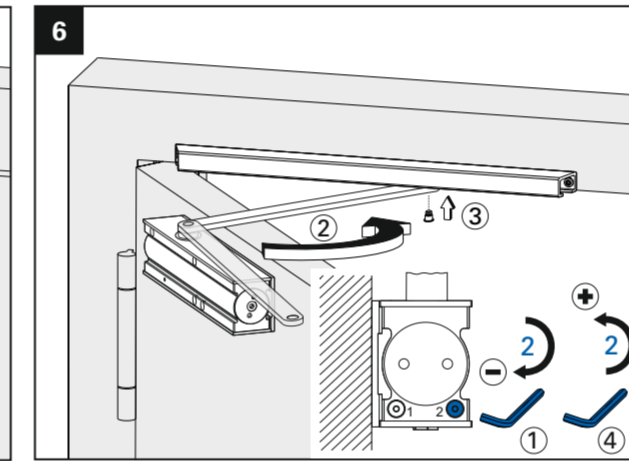
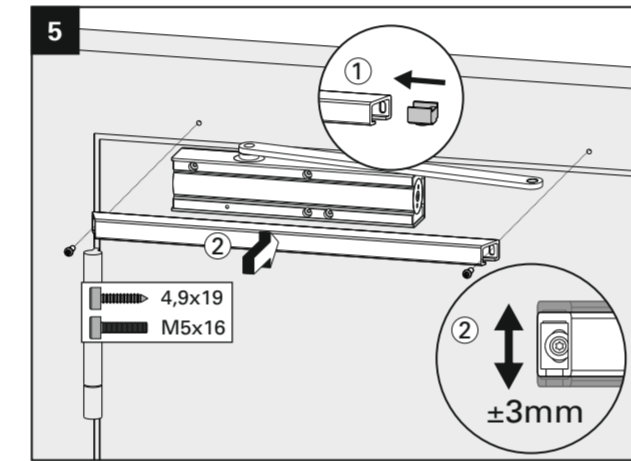
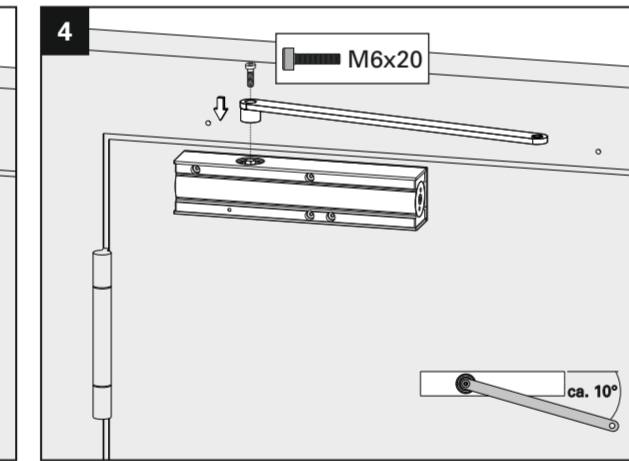
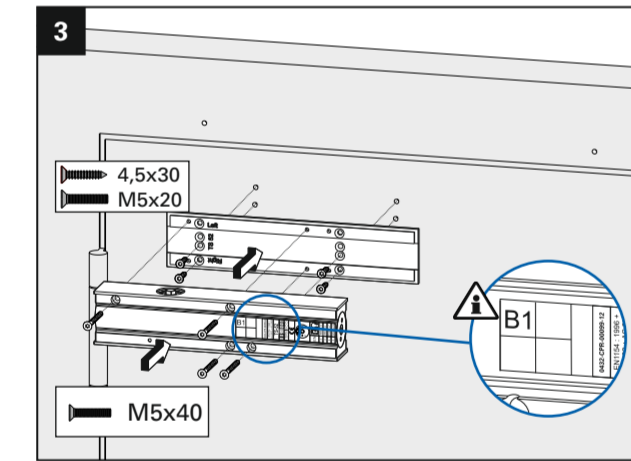
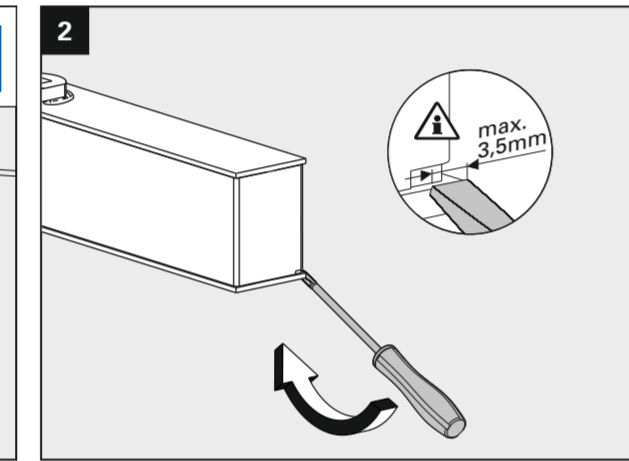
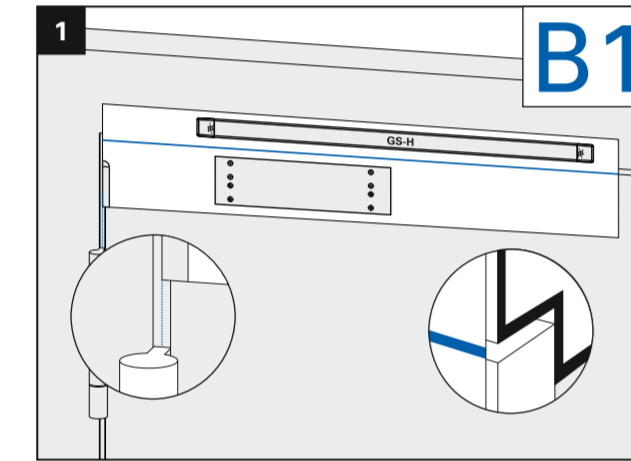
Lochgruppe gemäß Beiblatt 1 zur DIN EN 1154  
 Drillings according to supplemental sheet 1 DIN EN 1154  
 Alésage selon supplément 1 DIN EN 1154



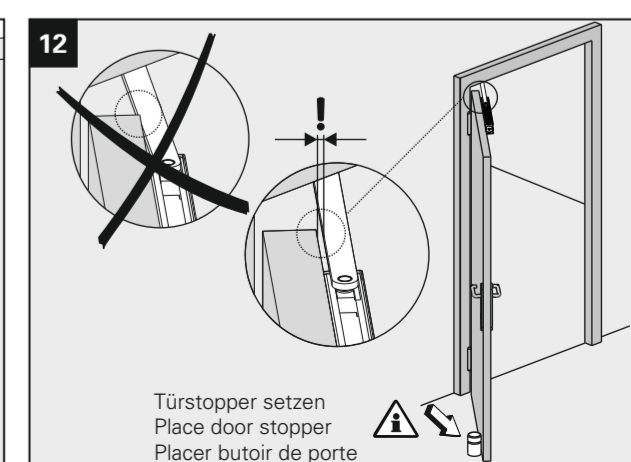
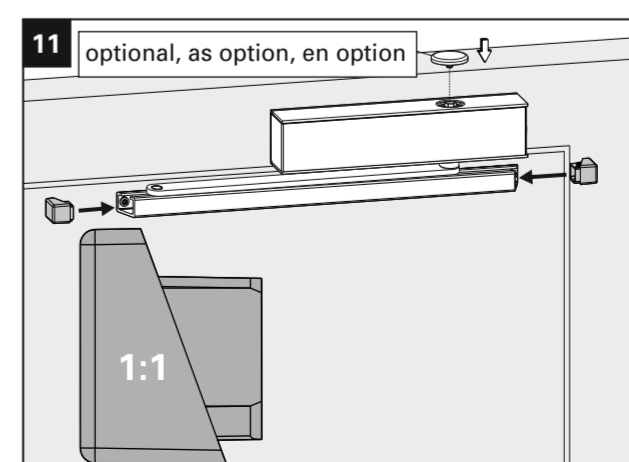
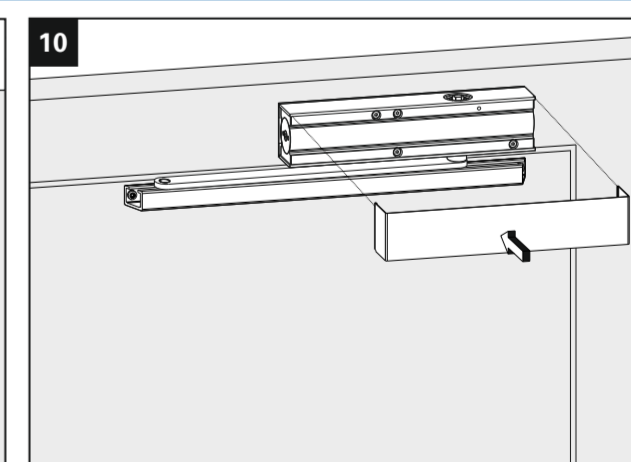
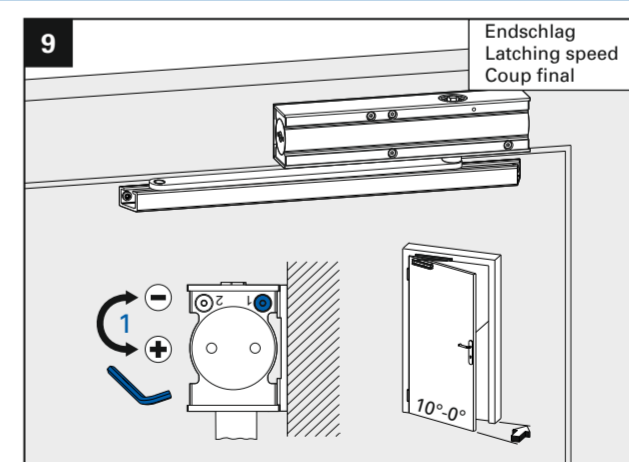
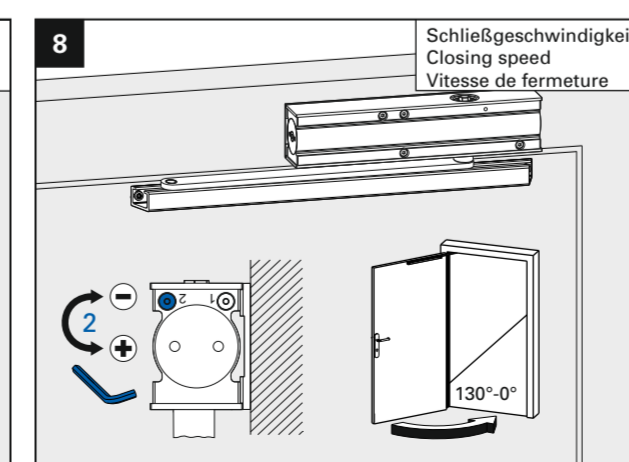
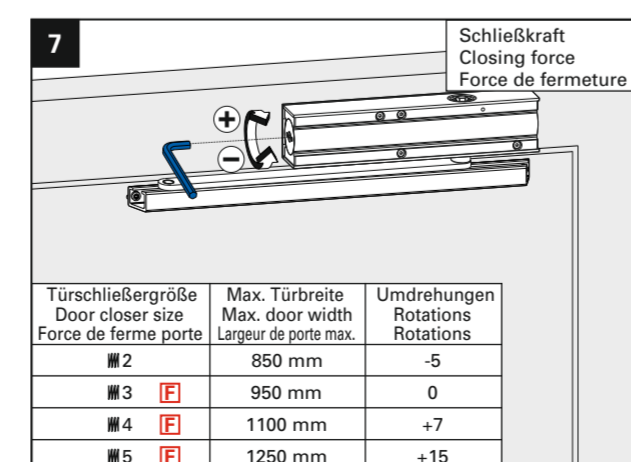
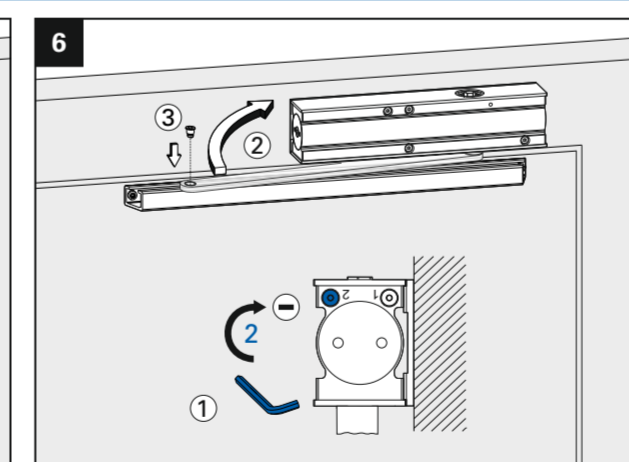
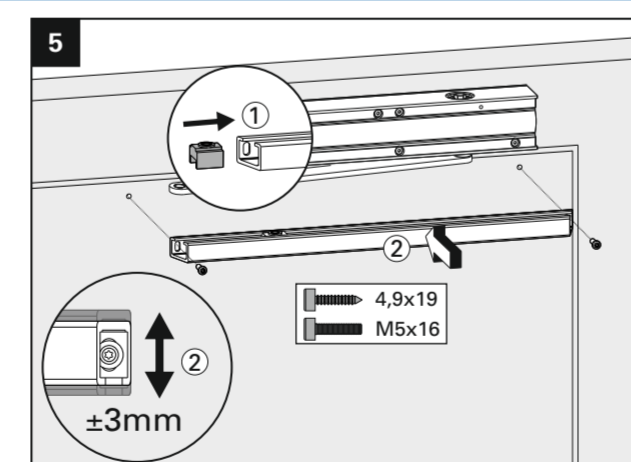
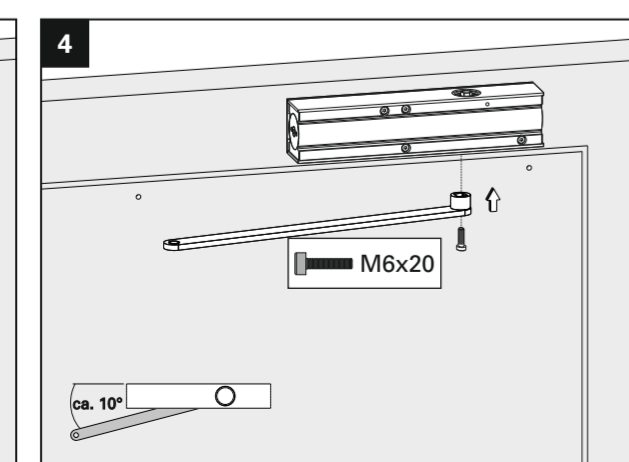
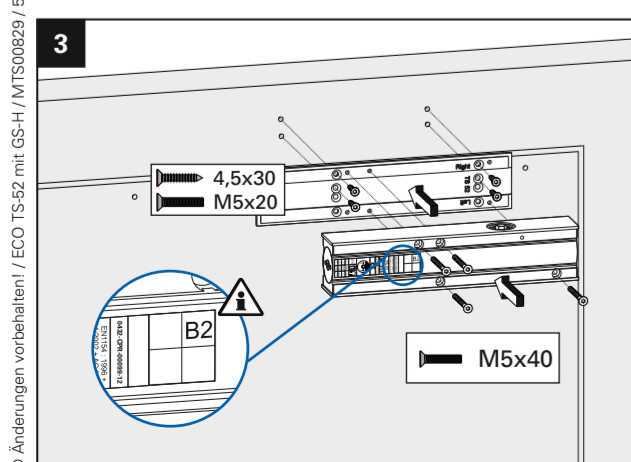
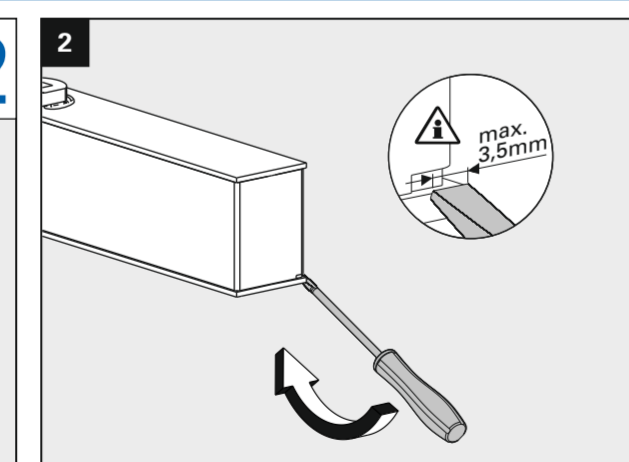
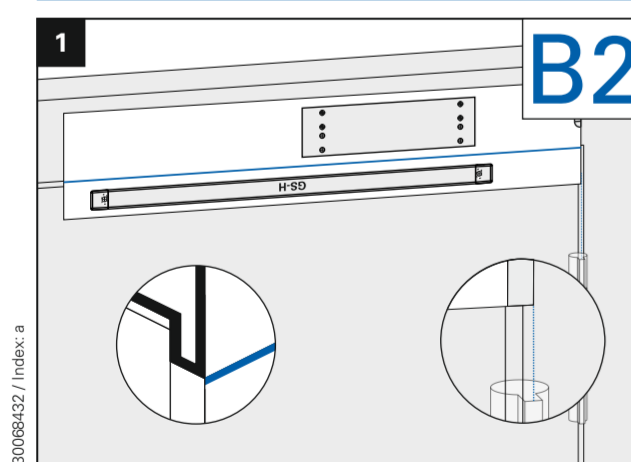
DIN links / left / gauche

### ARBONIA TS23 EN 2-5

<b>CE</b>	Arbonia Doors GmbH Mainzerhofplatz 14 99084 Erfurt Deutschland	17
0432-CPR-00099-12	EN 1154:1996/A1:2002/ AC:2006	4 8 2-5 1 1 4



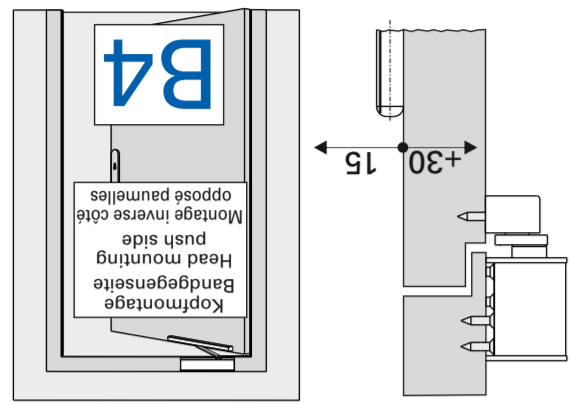
Türschließergröße Door closer size Force de ferme porte	Max. Türbreite Max. door width Largeur de porte max.	Umdrehungen Rotations Rotations
■ 2	850 mm	-5
■ 3	950 mm	0
■ 4	1100 mm	+7
■ 5	1250 mm	+15



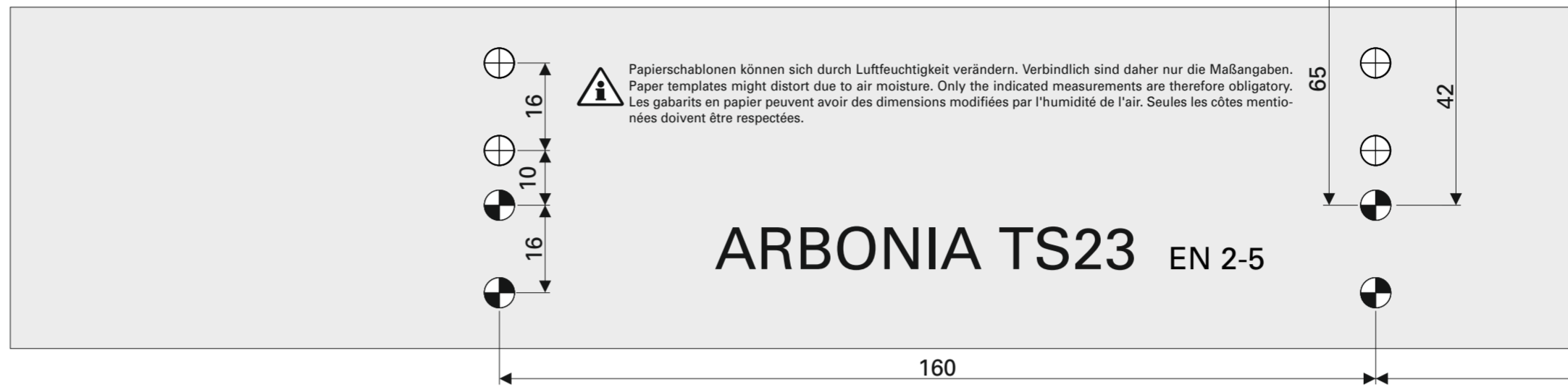
# GS-H

428,5

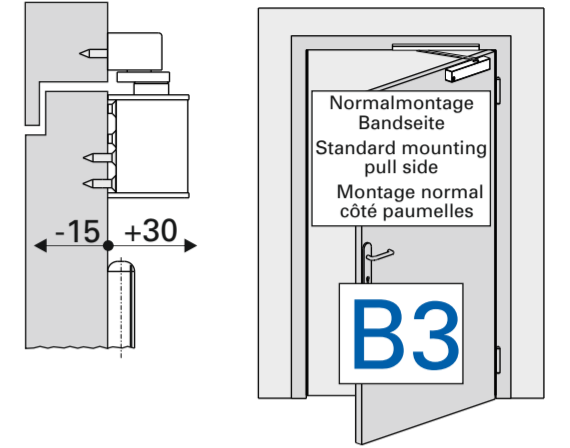
120



Lochgruppe gemäß Beiblatt 1 zur DIN EN 1154  
 Drillings according to supplemental sheet 1 DIN EN 1154  
 Alésage selon supplément 1 DIN EN 1154



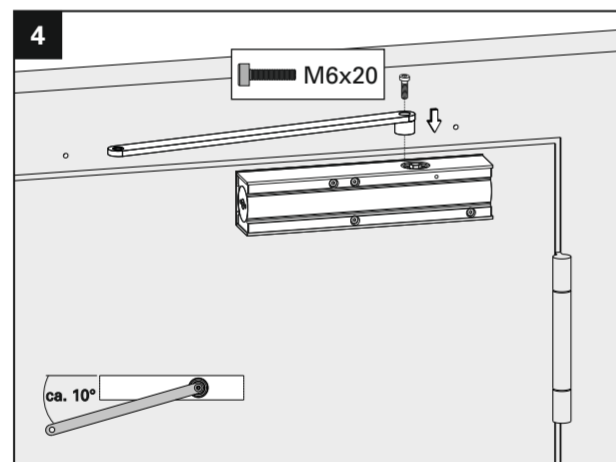
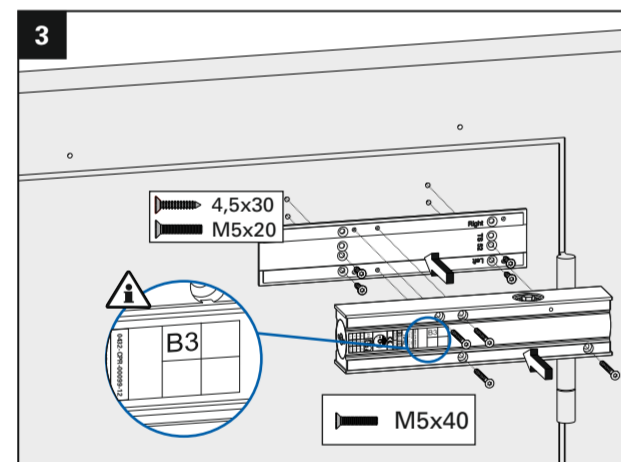
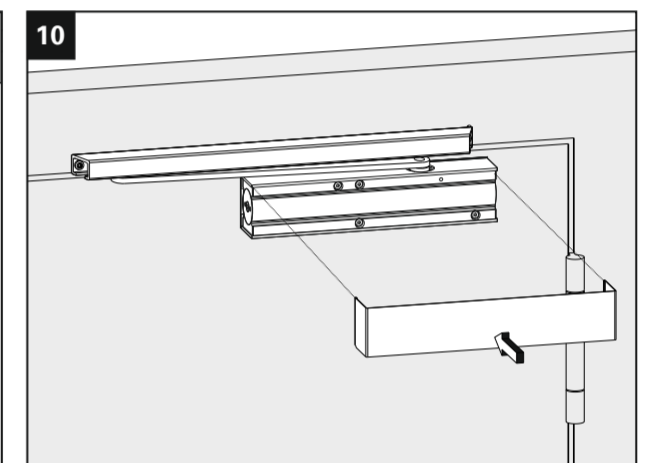
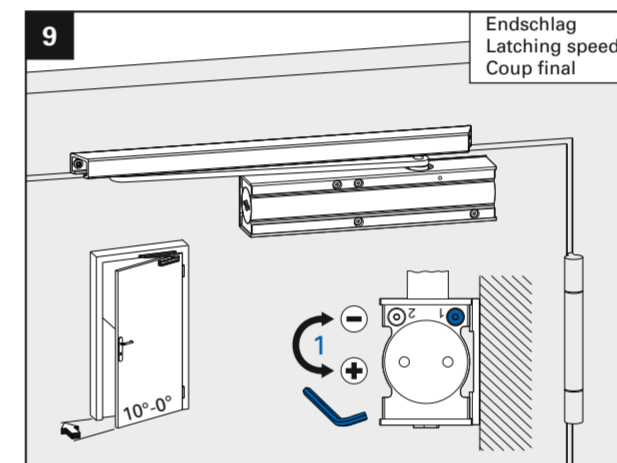
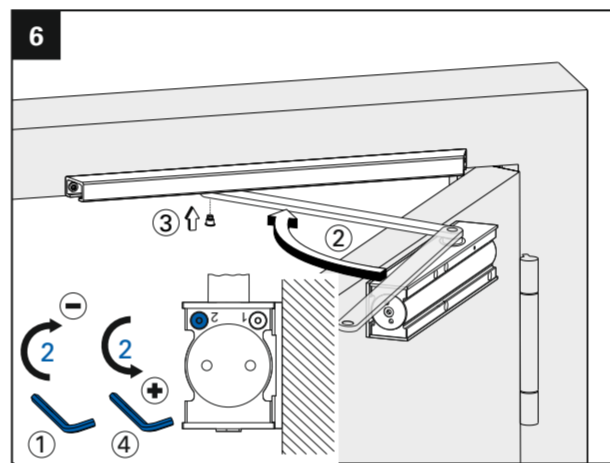
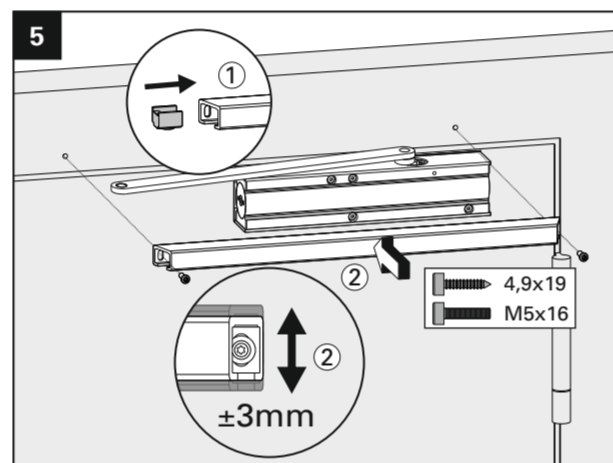
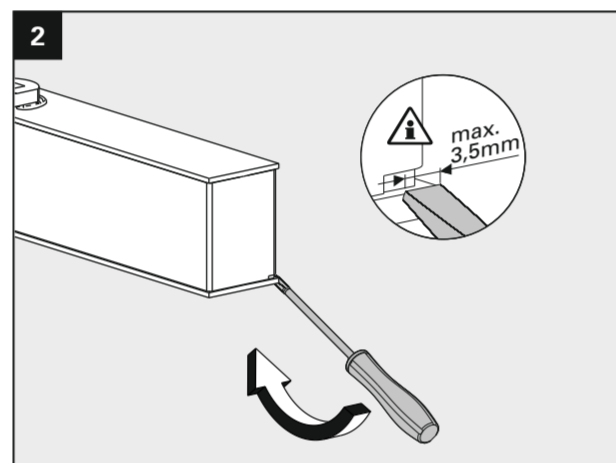
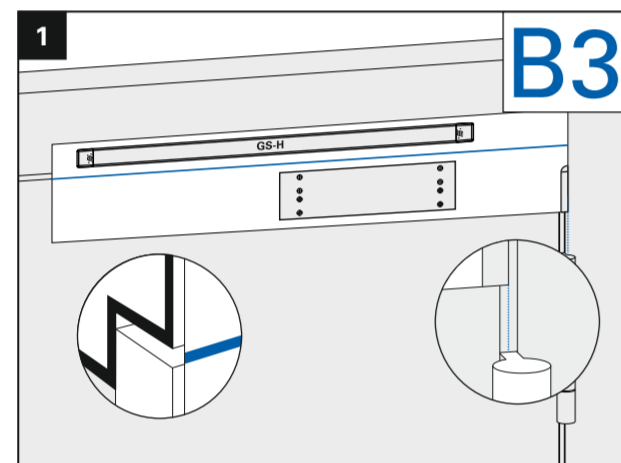
## ARBONIA TS23 EN 2-5



DIN rechts / right / droite

## ARBONIA TS23 EN 2-5

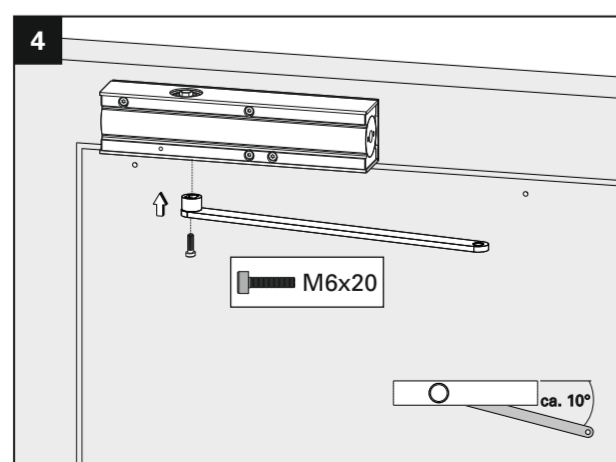
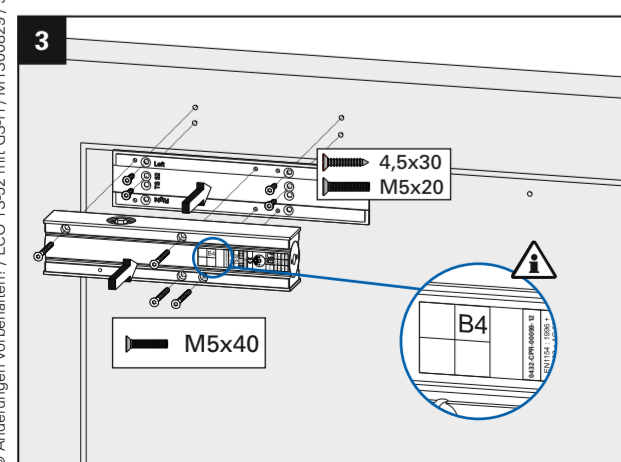
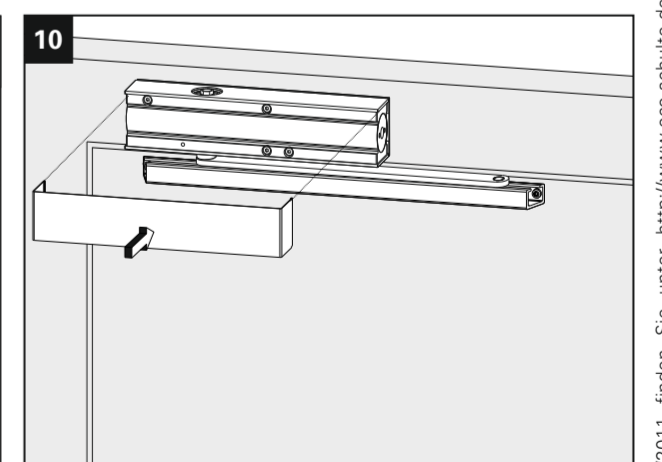
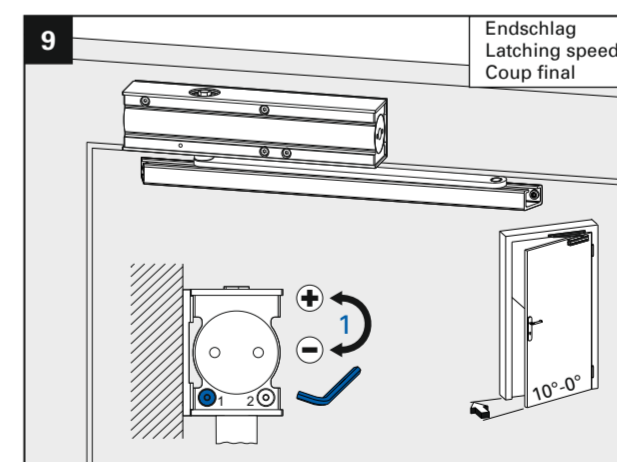
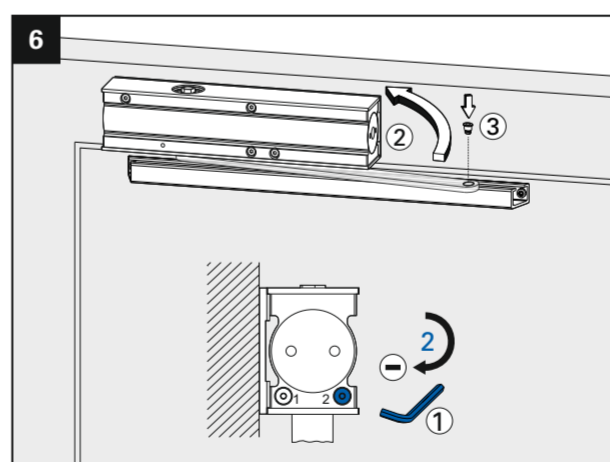
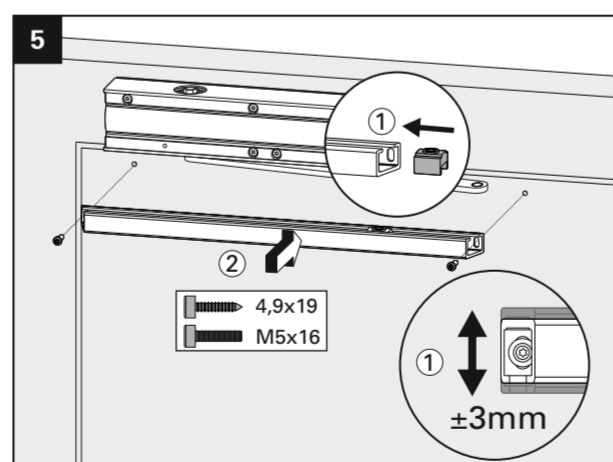
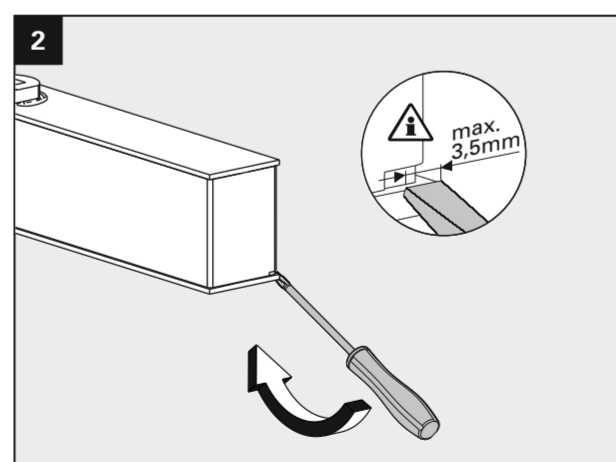
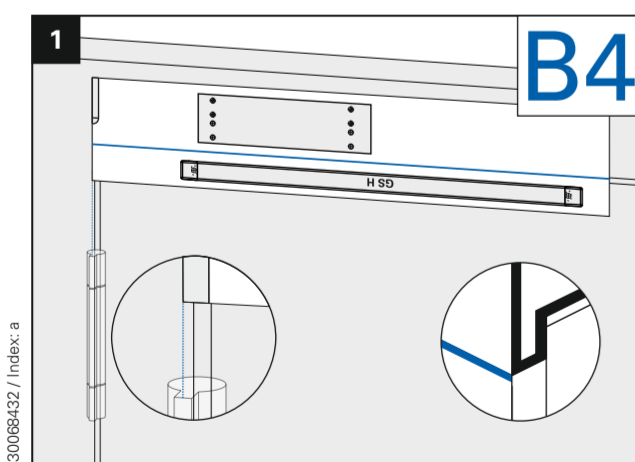
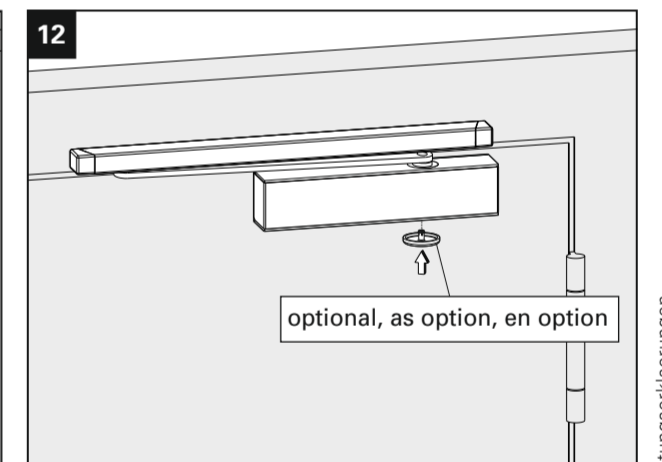
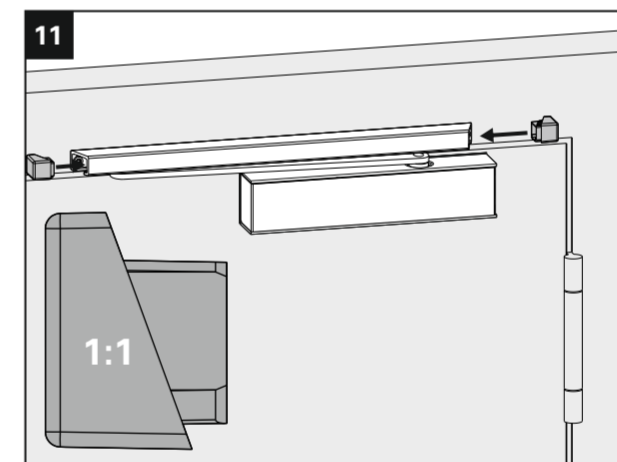
<b>CE</b>	Arbonia Doors GmbH Mainzerhofplatz 14 99084 Erfurt Deutschland	17
0432-CPR-00099-12	EN 1154:1996/A1:2002/ AC:2006	4 8 2-5 1 1 4



Schließkraft  
Closing force  
Force de fermeture

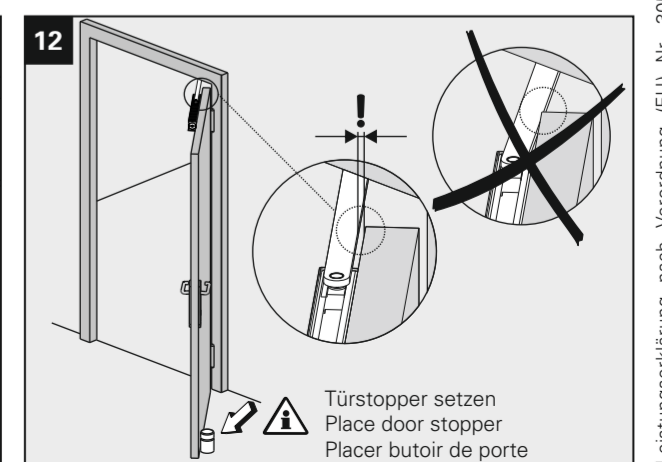
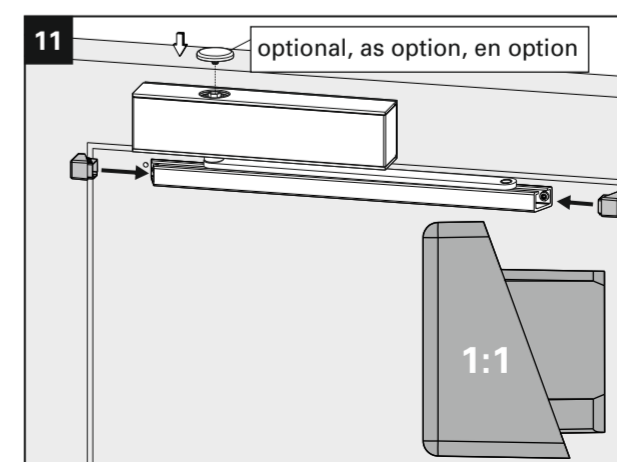
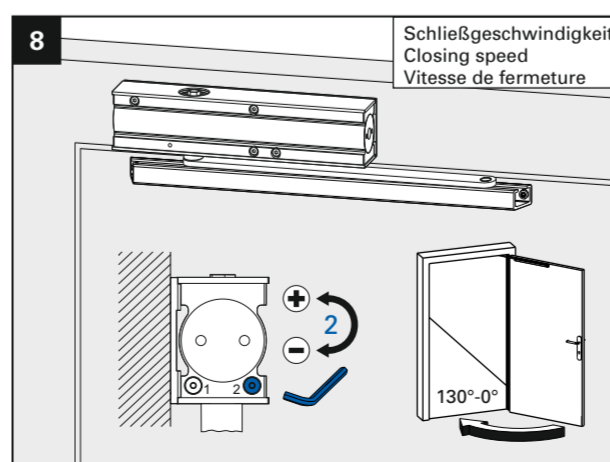
Türschließgröße Door closer size Force de ferme porte	Max. Türbreite Max. door width Largeur de porte max.	Umdrehungen Rotations Rotations
■ 2	850 mm	-5
■ 3 <b>F</b>	950 mm	0
■ 4 <b>F</b>	1100 mm	+7
■ 5 <b>F</b>	1250 mm	+15

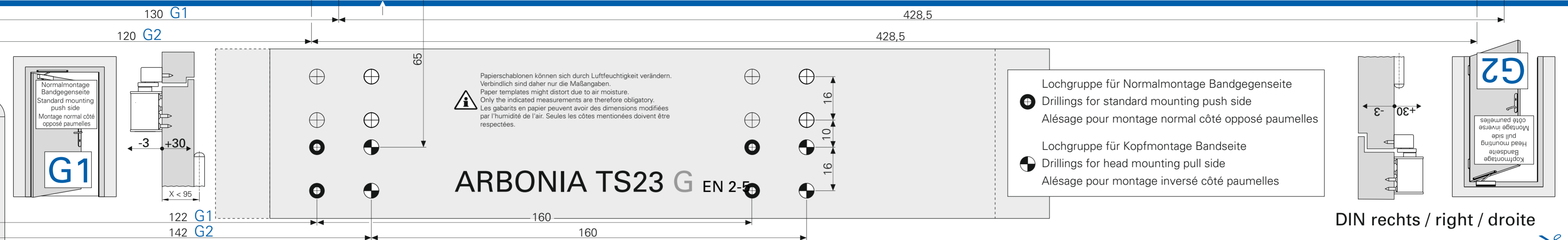
Schließgeschwindigkeit  
Closing speed  
Vitesse de fermeture



Schließkraft  
Closing force  
Force de fermeture

Türschließgröße Door closer size Force de ferme porte	Max. Türbreite Max. door width Largeur de porte max.	Umdrehungen Rotations Rotations
■ 2	850 mm	-5
■ 3 <b>F</b>	950 mm	0
■ 4 <b>F</b>	1100 mm	+7
■ 5 <b>F</b>	1250 mm	+15





<b>CE</b>	Arbonia Doors GmbH Mainzerhofplatz 14 99084 Erfurt Deutschland	17
0432-CPR-00099-12	EN 1154:1996/A1:2002/ AC:2006	4 8 2-5 1 1 4

## ARBONIA TS23 EN 2-5

**1** **G1**

**2**

**3**

**4**

**5**

**6**

**7**

Schließkraft  
Closing force  
Force de fermeture

Türschließergröße Door closer size Force de ferme porte	Max. Türbreite Max. door width Largeur de porte max.	Umdrehungen Rotations Rotations
■ 2	850 mm	-5
■ 3 <b>F</b>	950 mm	0
■ 4 <b>F</b>	1100 mm	+7
■ 5 <b>F</b>	1250 mm	+15

**8**

Schließgeschwindigkeit  
Closing speed  
Vitesse de fermeture

**9**

Endschlag  
Latching speed  
Coup final

**10**

**11**

optional, as option, en option

**12**

Türstopper setzen  
Place door stopper  
Placer butoir de porte

**1** **G2**

**2**

**3**

**4**

**5**

**6**

**7**

Schließkraft  
Closing force  
Force de fermeture

Türschließergröße Door closer size Force de ferme porte	Max. Türbreite Max. door width Largeur de porte max.	Umdrehungen Rotations Rotations
■ 2	850 mm	-5
■ 3 <b>F</b>	950 mm	0
■ 4 <b>F</b>	1100 mm	+7
■ 5 <b>F</b>	1250 mm	+15

**8**

Schließgeschwindigkeit  
Closing speed  
Vitesse de fermeture

**9**

Endschlag  
Latching speed  
Coup final

**10**

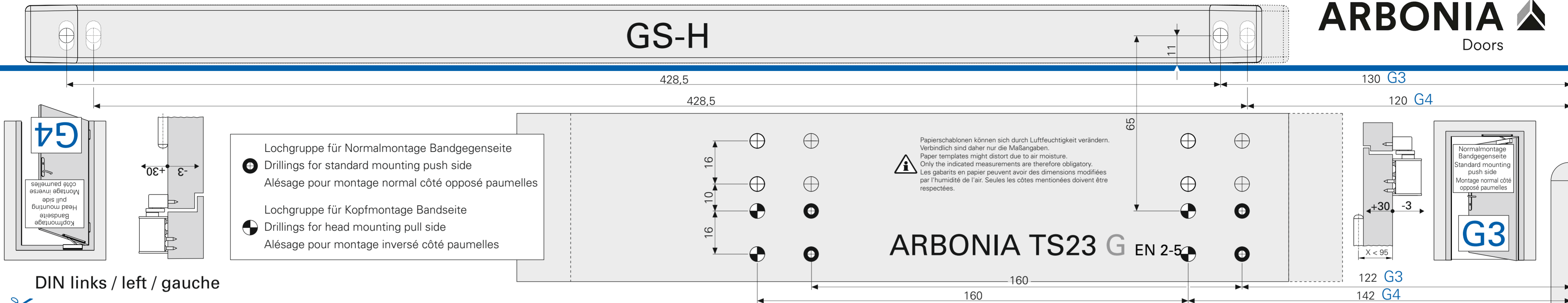
**11**

optional, as option, en option

**12**

optional, as option, en option

## GS-H



Lochgruppe für Normalmontage Bandgegenseite  
 Drillings for standard mounting push side  
 Alésage pour montage normal côté opposé paumelles

Lochgruppe für Kopfmontage Bandseite  
 Drillings for head mounting pull side  
 Alésage pour montage inversé côté paumelles

DIN links / left / gauche

## ARBONIA TS23 EN 2-5

	Arbonia Doors GmbH Mainzerhofplatz 14 99084 Erfurt Deutschland	17
0432-CPR-00099-12	EN 1154:1996/A1:2002/ AC:2006	4 8 2-5 1 1 4

**1** **G3**

**2**

**5**

**6**

**9** Endschlag  
Latching speed  
Coup final

**10**

**3**

**4**

**7** Schließkraft  
Closing force  
Force de fermeture

Türschließgröße Door closer size Force de ferme porte	Max. Türbreite Max. door width Largeur de porte max.	Umdrehungen Rotations Rotations
■ 2	850 mm	-5
■ 3 <b>F</b>	950 mm	0
■ 4 <b>F</b>	1100 mm	+7
■ 5 <b>F</b>	1250 mm	+15

**8** Schließgeschwindigkeit  
Closing speed  
Vitesse de fermeture

**11**

**12**

**1** **G4**

**2**

**5**

**6**

**9** Endschlag  
Latching speed  
Coup final

**10**

**3**

**4**

**7** Schließkraft  
Closing force  
Force de fermeture

Türschließgröße Door closer size Force de ferme porte	Max. Türbreite Max. door width Largeur de porte max.	Umdrehungen Rotations Rotations
■ 2	850 mm	-5
■ 3 <b>F</b>	950 mm	0
■ 4 <b>F</b>	1100 mm	+7
■ 5 <b>F</b>	1250 mm	+15

**8** Schließgeschwindigkeit  
Closing speed  
Vitesse de fermeture

**11**

**12** optional, as option, en option